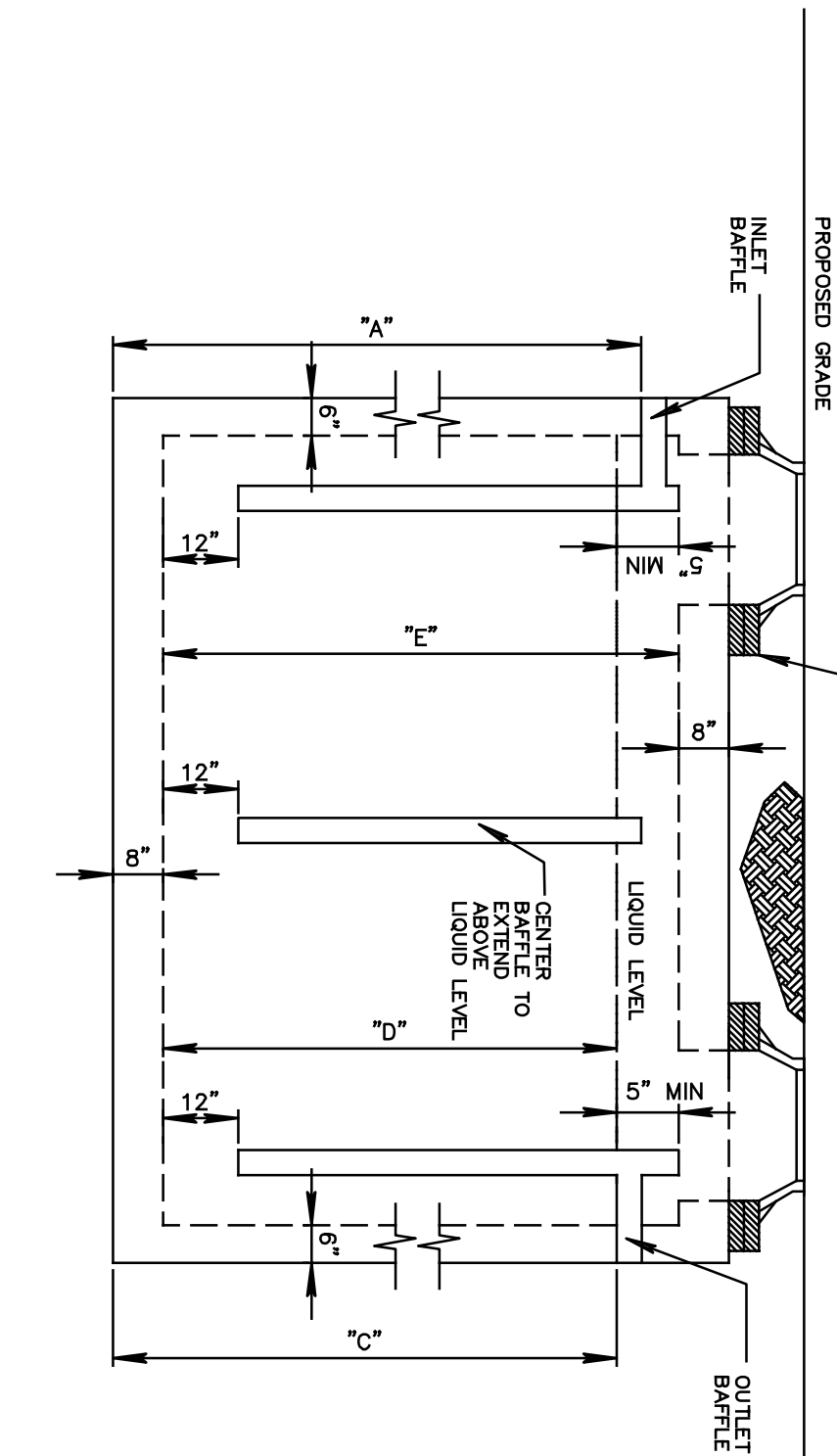


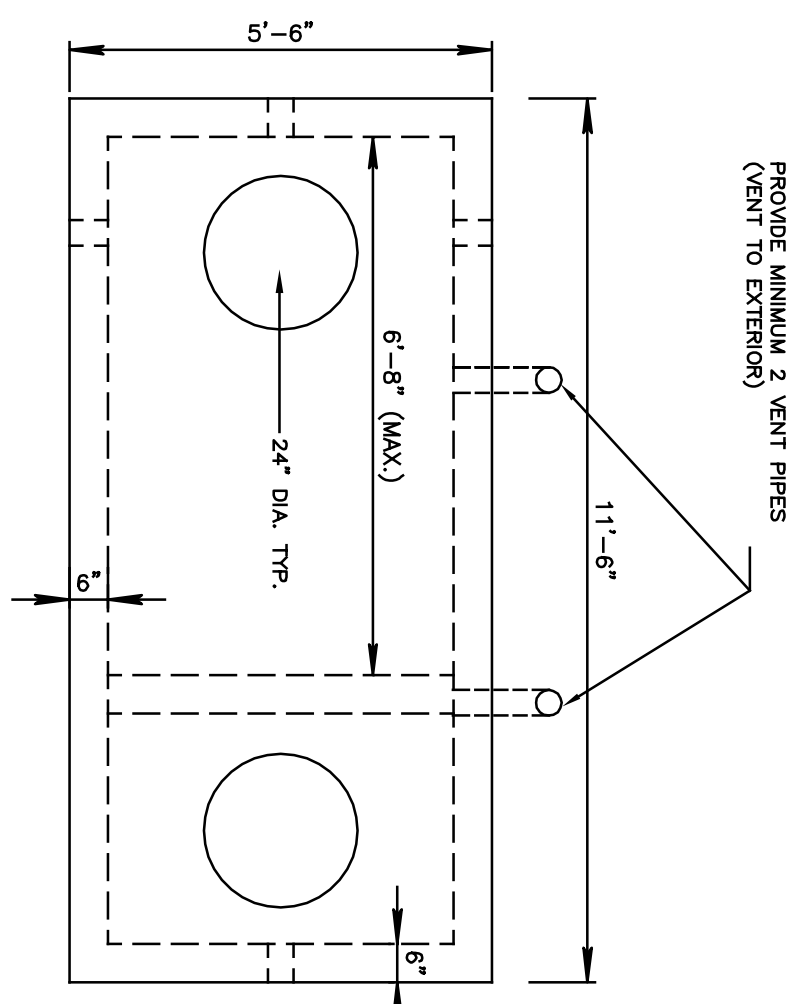
H-20 GREASE TRAP

- NOTES:
- > CAPACITY: 2000 GALLONS
 - > MATERIALS: CONCRETE STRUCTURE - 5,000 PSI @ 28 DAYS
 - > MATERIALS MANUFACTURING PER ASTM C-1227
 - > STEEL REINFORCEMENT - WELDED DEFORMED BARS 4"x4" @ 5/16" O.C.
 - > CONSTRUCTION JOINT SEALED WITH 1" BUTYL MASTIC ASTM C-980
 - > 4" DIA. OUTLET THE EQUIPPED WITH GAS REFLECTOR OR EFFLUENT FILTER
 - > REQUIREMENTS OF ASTM C-923
 - > CAPACITY & FLOW LINE: 1,028 GALLONS
 - > APPROXIMATE ASSEMBLED WEIGHT: 16,800 LBS.
 - > APPROXIMATE CONSTRUCTION JOINT ON LARGER SIZES IS BELOW STAMP LEVEL.



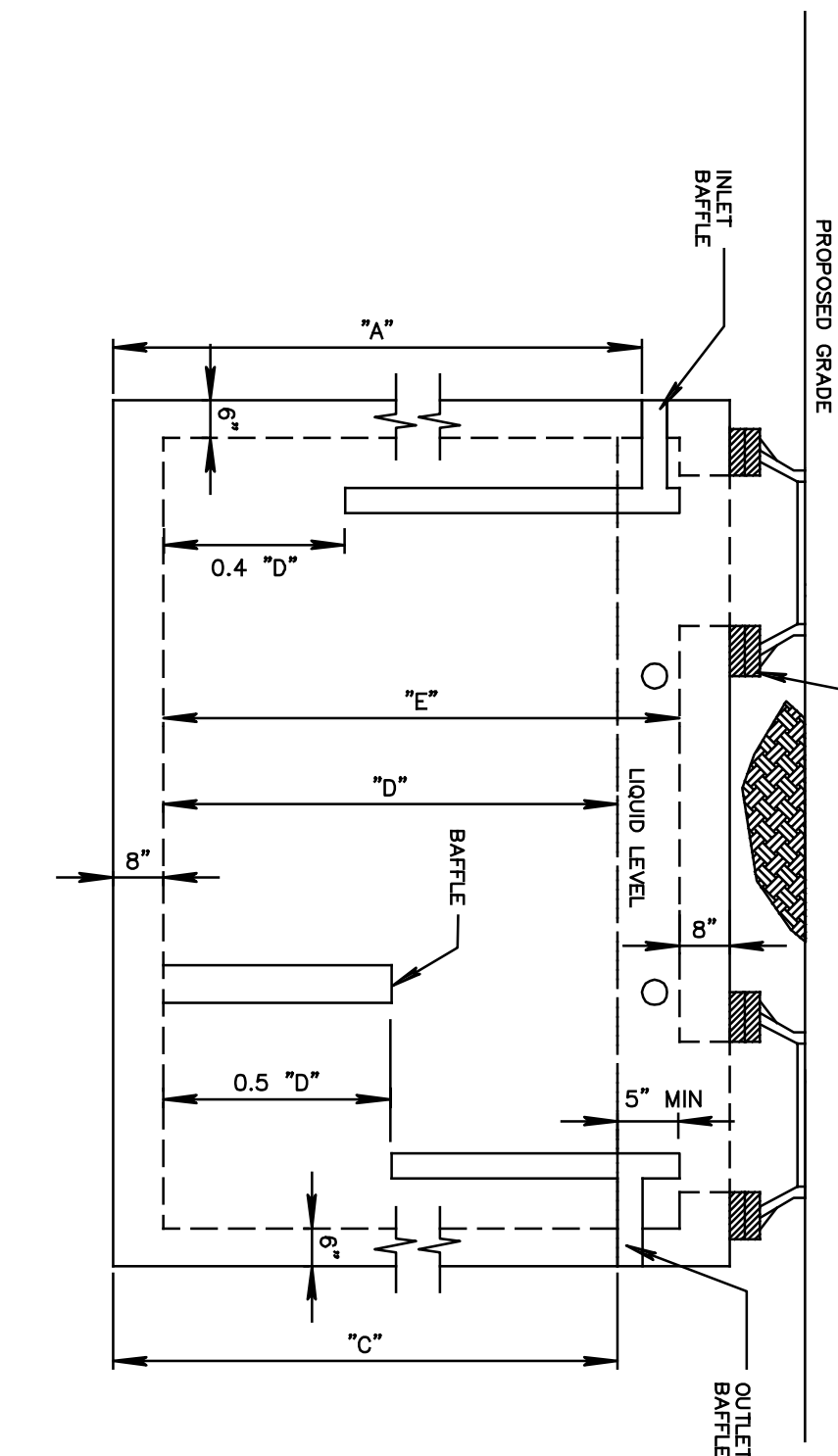
TANK CAPACITY	INLET HGT.	OUTLET HGT.	LIQUID LEVEL	INSIDE HGT.
1000 GAL.	47"	61"	44"	36"
1250 GAL.	56"	70"	53"	45"
1500 GAL.	66"	79"	63"	54"
2000 GAL.	82"	95"	79"	69"
2500 GAL.	102"	115"	98"	89"
3000 GAL.	117"	130"	108"	104"

* 1000 GALLONS MINIMUM SIZE



H-20 OIL - SAND SEPARATOR

- NOTES:
- > CAPACITY: 2000 GALLONS
 - > MATERIALS: CONCRETE STRUCTURE - 5,000 PSI @ 28 DAYS
 - > MATERIALS MANUFACTURING PER ASTM C-1227
 - > STEEL REINFORCEMENT - WELDED DEFORMED BARS 4"x4" @ 5/16" O.C.
 - > CONSTRUCTION JOINT SEALED WITH 1" BUTYL MASTIC ASTM C-980
 - > APPROXIMATE ASSEMBLED WEIGHT: 16,800 LBS.
 - > APPROXIMATE CONSTRUCTION JOINT ON LARGER SIZES IS BELOW STAMP LEVEL.



TANK CAPACITY	INLET HGT.	OUTLET HGT.	LIQUID LEVEL	INSIDE HGT.
1000 GAL.	47"	61"	44"	36"
1250 GAL.	56"	70"	53"	45"
1500 GAL.	66"	79"	63"	54"
2000 GAL.	82"	95"	79"	69"
2500 GAL.	102"	115"	98"	89"
3000 GAL.	117"	130"	108"	104"

THESE PLANS OF "STANDARD CONSTRUCTION DETAILS" ACCOMPANY THE ADOPTED RULES AND REGULATIONS OF THE WATER POLLUTION CONTROL AUTHORITY, TOWN OF BROOKFIELD, CONNECTICUT, DATED MARCH, 2010.

NO.	DATE	REVISION	DRAWN	CHKD	RELD

Bsg BIRDSALL SERVICES GROUP
 ENGINEERS & CONSULTANTS

BIRDSALL ENGINEERING, INC.
 611 INDUSTRIAL WAY WEST
 EATONTOWN NJ 07724
 CHESTER CT AUTHORIZATION No. 24GA27989800

Tel: 732.380.1700
 Fax: 732.380.1701
 WWW.BIRDSALL.COM

DATE: _____

JAY T. PISCO, P.E.
 PROFESSIONAL ENGINEER
 CT. Lic. No. 25817

WPCA
 P.O. BOX 5106
 BROOKFIELD
 FAIRFIELD COUNTY
 CONNECTICUT

Drawing Name:
 BROOK_STANDARD_DETAILS.dwg

STANDARD CONSTRUCTION DETAILS
WATER POLLUTION CONTROL AUTHORITY
BROOKFIELD, CONNECTICUT

Job No. 200046450001
 Scaled: N/A
 Date: 01/08/10

Drawn: JDR	Checked: DJD	Released: JP
Designed: JDR/WNI	Reviewed: JP	Drawn Number:

SHEET NO. **3**
 OF 4