

Figure 1-1

Study Areas

Sanitary Sewer Extension Study

Candlewood Lake Area

Brookfield, Connecticut

DRAFT October 2023

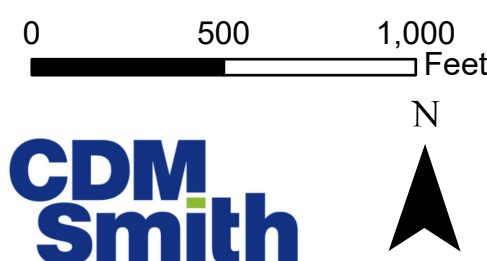


Figure 2-1
Dean and Pocono Roads Study Area
Sanitary Sewer Extension Study
Dean and Pocono Roads and Candlewood Lake Area
Brookfield, Connecticut
DRAFT October 2023



0 500 1,000 Feet

**CDM
Smith**



Figure 2-2

Candlewood Peninsula Study Area
Sanitary Sewer Extension Study
Dean and Pocono Roads and Candlewood Lake Area
Brookfield, Connecticut
DRAFT October 2023



Figure 2-3

Candlewood Lake Club Study Area
Sanitary Sewer Extension Study
Dean and Pocono Roads and Candlewood Lake Area
Brookfield, Connecticut

DRAFT October 2023



0 500 1,000 Feet



**CDM
Smith**

Figure 2-4
Northern Candlewood Lake Road Study Area
Sanitary Sewer Extension Study
Dean and Pocono Roads and Candlewood Lake Area
Brookfield, Connecticut
DRAFT October 2023

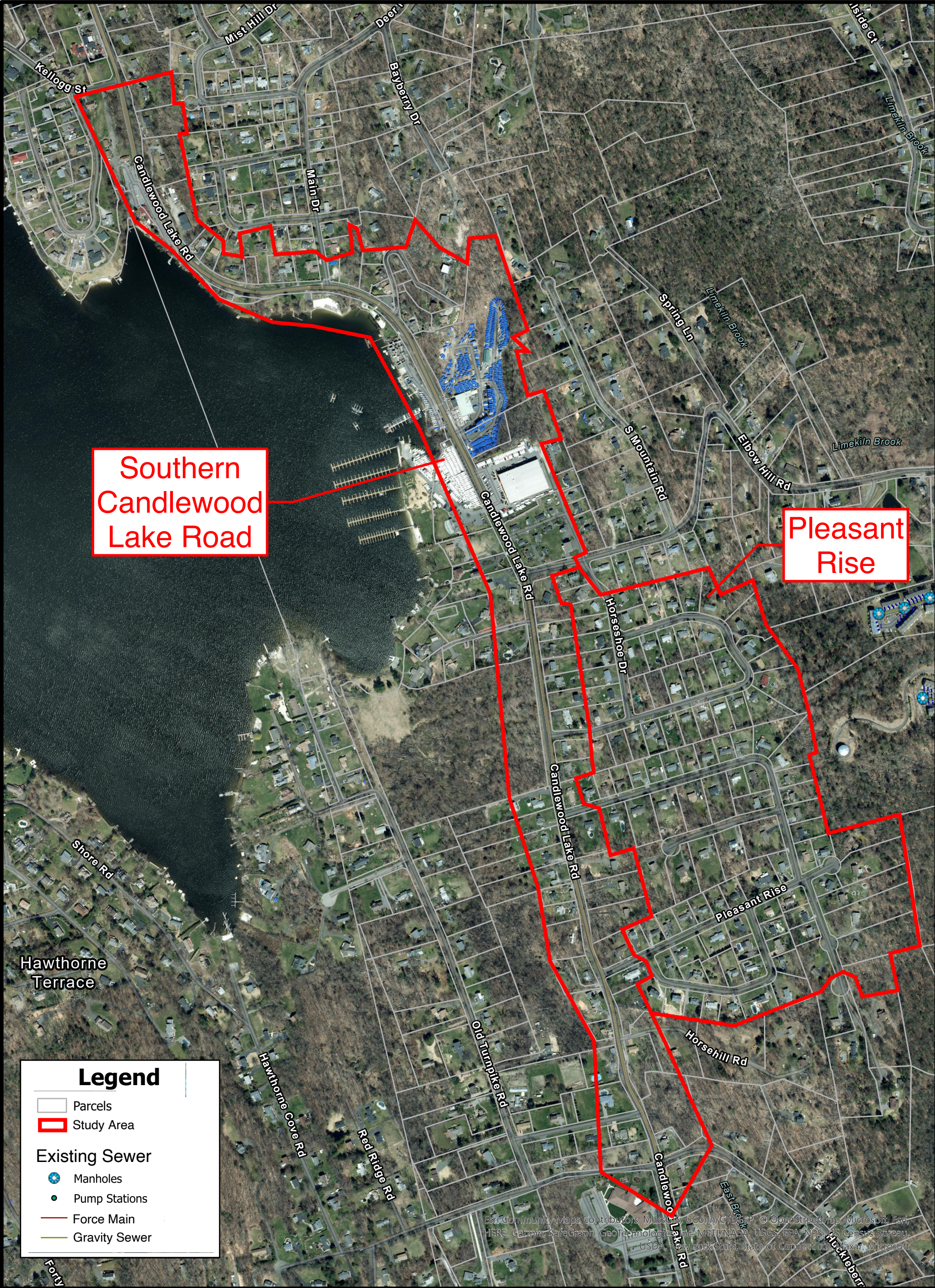


Figure 2-5
Southern Candlewood Lake Road and Pleasant Rise Study Area
Sanitary Sewer Extension Study
Dean and Pocono Roads and Candlewood Lake Area
Brookfield, Connecticut
DRAFT October 2023

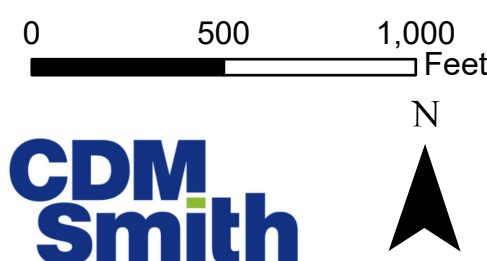


Figure 4-1
Dean and Pocono Roads Study Area; Subsurface Investigation Locations
Sanitary Sewer Extension Study
Dean and Pocono Roads and Candlewood Lake Area
Brookfield, Connecticut
DRAFT October 2023

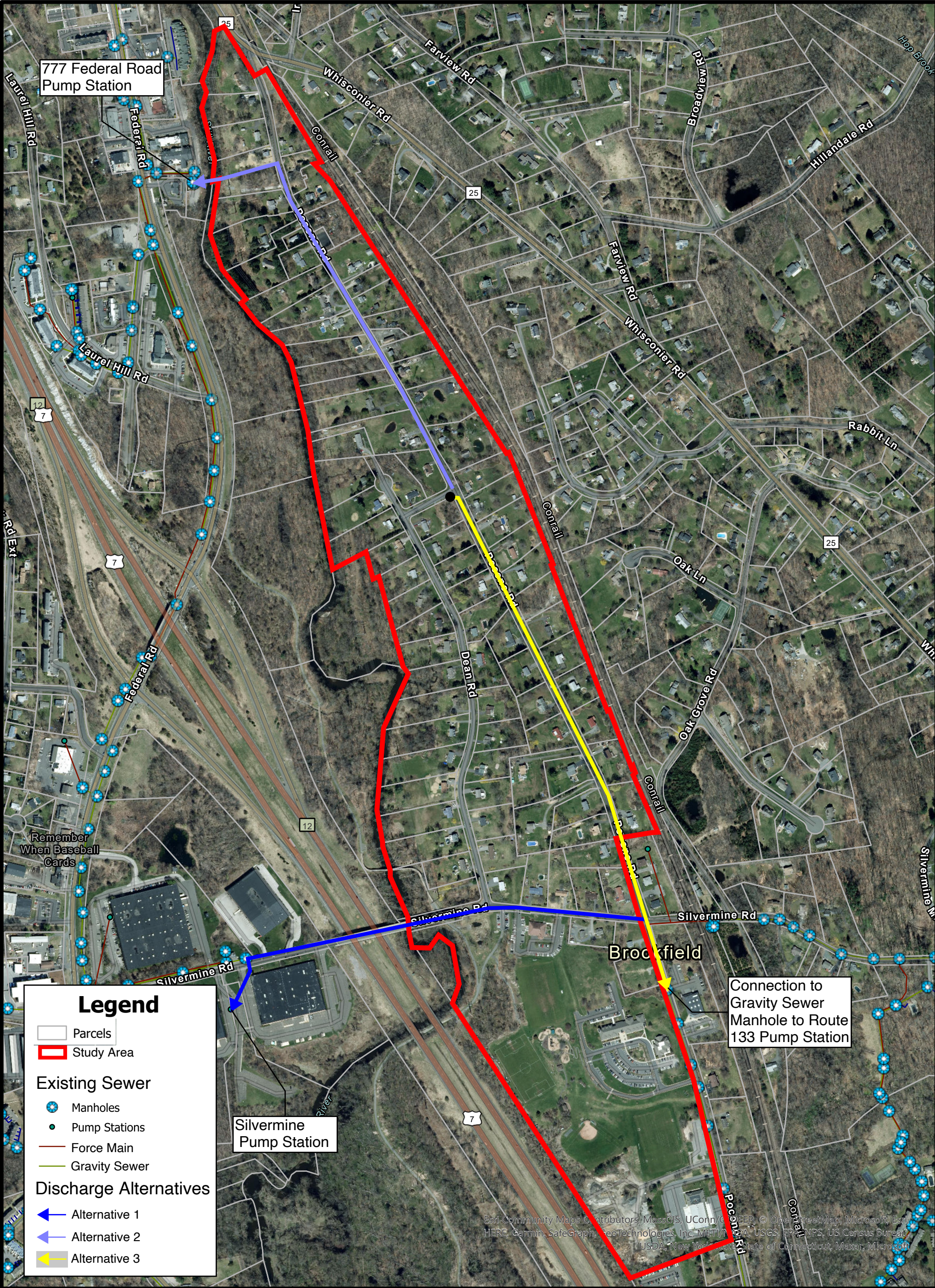


Figure 4-2
Dean and Pocono Roads Study Area; Proposed Discharge Locations
Sanitary Sewer Extension Study
Dean and Pocono Roads and Candlewood Lake Area
Brookfield, Connecticut
DRAFT October 2023



0 500 1,000 Feet

CDM
Smith



Figure 5-1
Candlewood Peninsula Study Area; Subsurface Investigation Locations
Sanitary Sewer Extension Study
Dean and Pocono Roads and Candlewood Lake Area
Brookfield, Connecticut
DRAFT October 2023

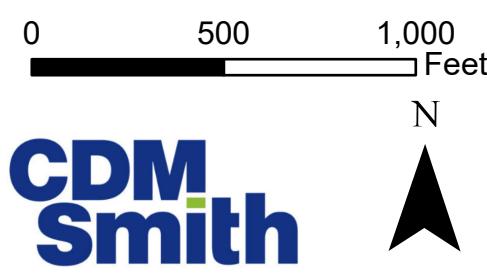
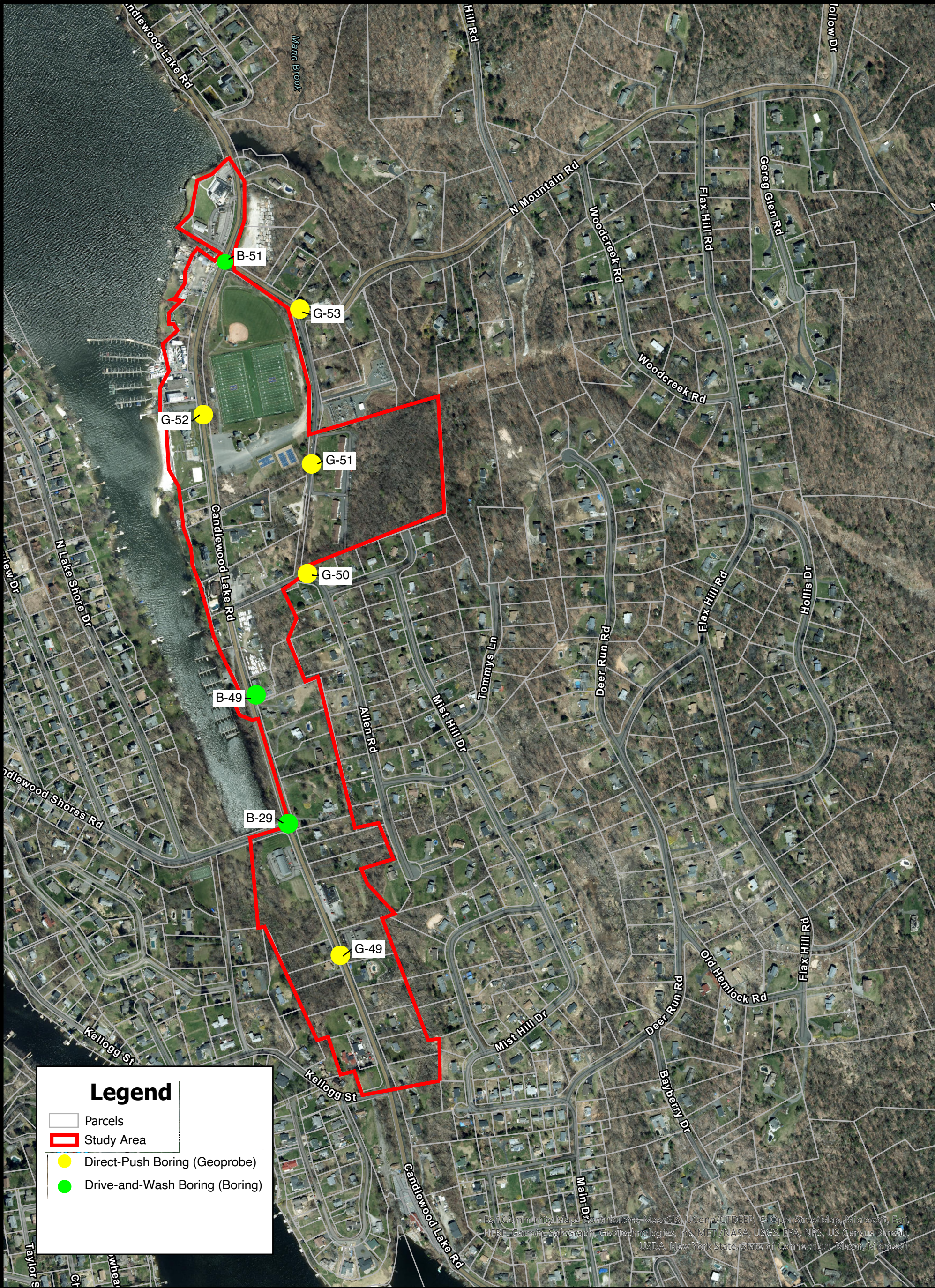


Figure 5-2
Candlewood Lake Club Study Area; Subsurface Investigation Locations
Sanitary Sewer Extension Study
Dean and Pocono Roads and Candlewood Lake Area
Brookfield, Connecticut
DRAFT October 2023



Legend

Parcels

Study Area

Direct-Push Boring (Geoprobe)

Drive-and-Wash Boring (Boring)

05001,000

Feet

N

CDM

Smith

Figure 5-3

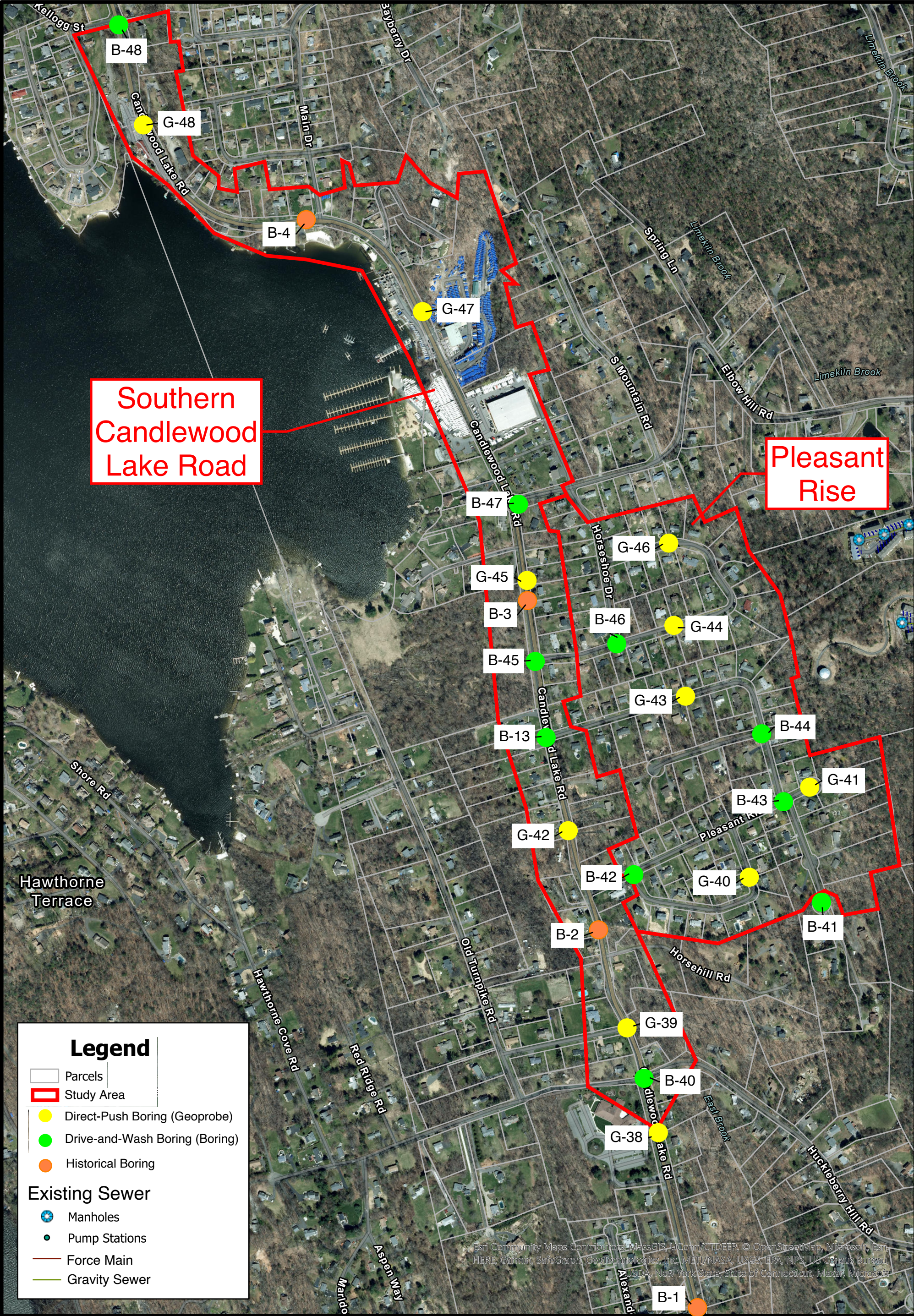
Northern Candlewood Lake Road Study Area; Subsurface Investigation Locations

Sanitary Sewer Extension Study

Dean and Pocono Roads and Candlewood Lake Area

Brookfield, Connecticut

DRAFT October 2023





PLAN
1"=600'

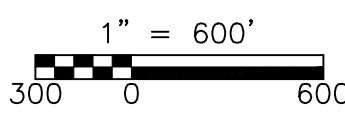
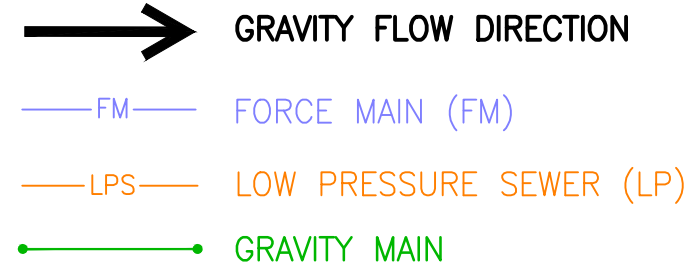
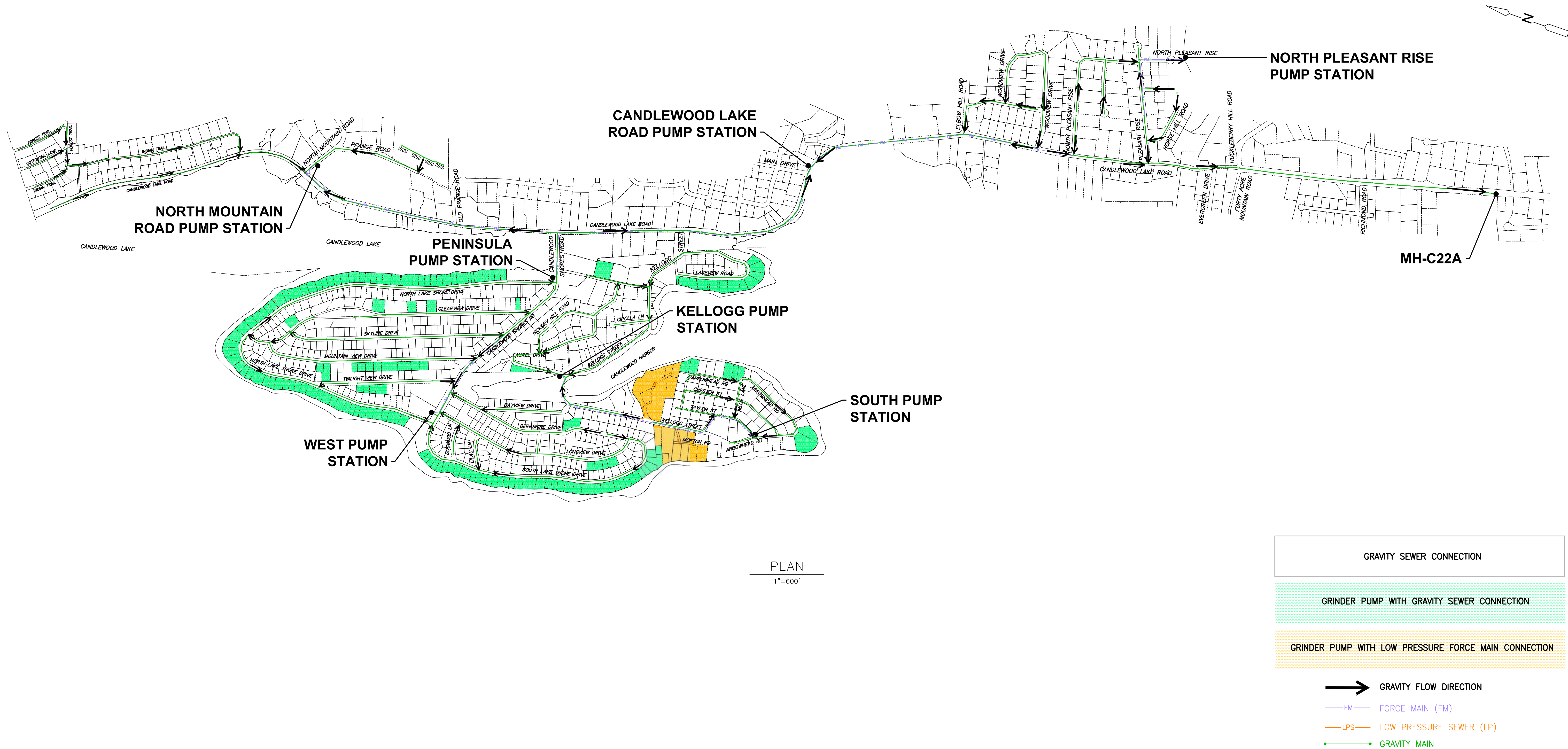


FIGURE 5-5

XREFs: [CDMS_2436] Images: []
Last saved by: CABREBAUG Time: 10/27/2023 12:09:39 PM
pw:\somerith-cad2-pw.bentley.com\pw_ph\261865\269061\04 Design Services NM_10%_01 BIM_CADD\ALTERNATIVE B.dwg
© 2023 CDM SMITH ALL RIGHTS RESERVED. THESE DOCUMENTS AND DESIGNS PROVIDED BY PROFESSIONAL SERVICE, INCORPORATED HEREIN, ARE THE PROPERTY OF CDM SMITH AND ARE NOT TO BE USED, IN WHOLE OR PART, FOR ANY OTHER PROJECT WITHOUT THE WRITTEN AUTHORIZATION OF CDM SMITH.



REV. NO.	DATE	DRWN	CHKD	REMARKS

DESIGNED BY: T. REESER
DRAWN BY: S. ENGEL/J. CABRERA
SHEET CHK'D BY: D. MURPHY
CROSS CHK'D BY: K. WAGNER
APPROVED BY: _____
DATE: OCTOBER 2023

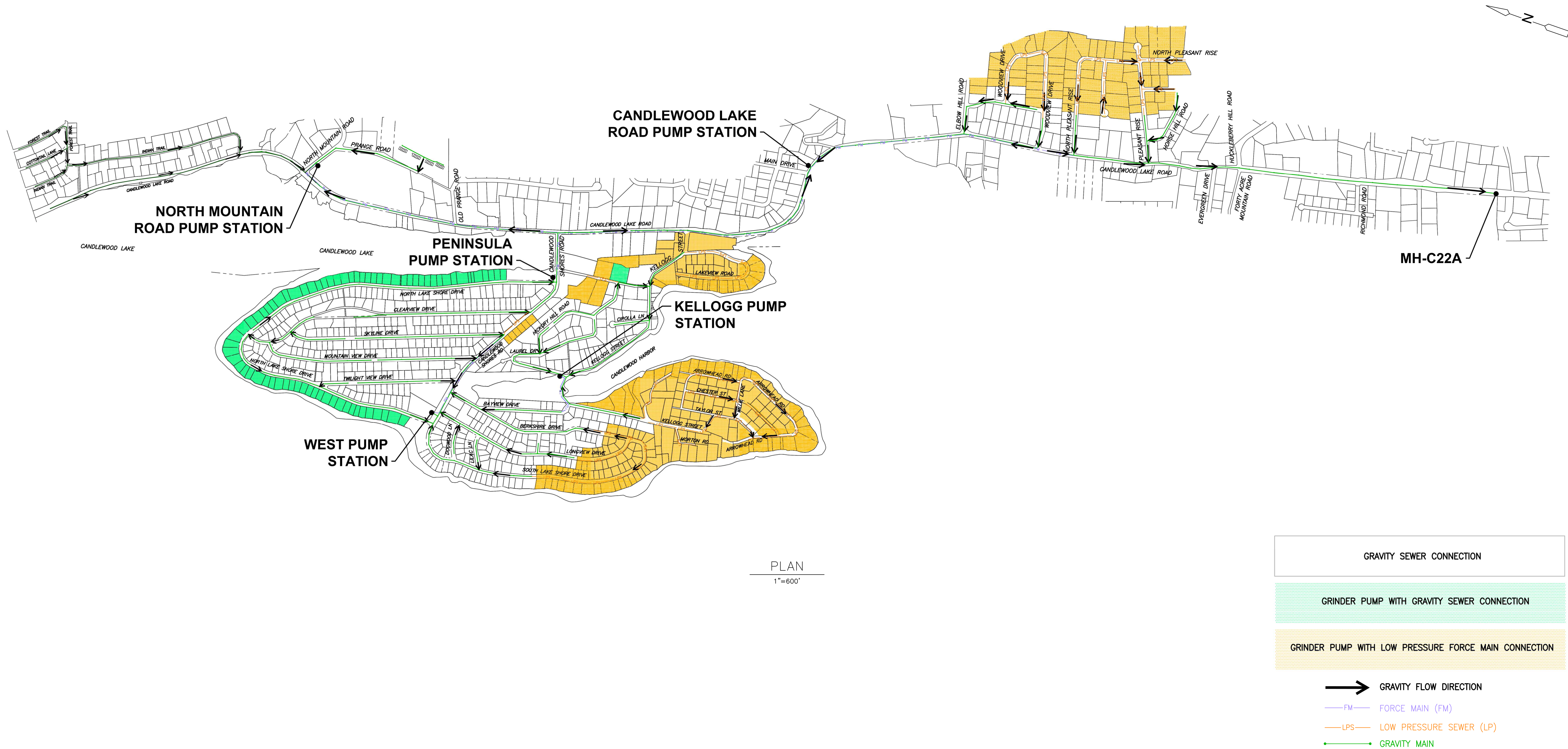
CDM Smith
77 Hartland Street, Suite 201
East Hartford, Connecticut
Tel: (860) 529-7615

BROOKFIELD, CONNECTICUT
POTENTIAL SEWER EXTENSION CONCEPT DESIGN
CANDLEWOOD PENINSULA AND
CANDLEWOOD LAKE ROAD AREA

ALTERNATIVE B
SHALLOWER GRAVITY SEWER SYSTEM WITH
SEVEN BWPCA PUMP STATIONS

PROJECT NO. 261865-269061
FILE NAME: ALTERNATIVE B
FIGURE 5-6

XREFs: [CDMS_2436] Images: []
Last saved by: CABREBAUG Time: 10/26/2023 8:24:05 PM
pw:\sdr\peninsula-cad2-pw.bentley.com\pw_1h\261865\269061\04 Design Services NM_10%_01 General\10 BIM_CADD\ALTERNATIVE C.dwg
© 2023 CDM SMITH ALL RIGHTS RESERVED. THESE DOCUMENTS AND DESIGNS PROVIDED BY PROFESSIONAL SERVICE, INCORPORATED HEREIN, ARE THE PROPERTY OF CDM SMITH AND ARE NOT TO BE USED, IN WHOLE OR PART, FOR ANY OTHER PROJECT WITHOUT THE WRITTEN AUTHORIZATION OF CDM SMITH.



REV. NO.	DATE	DRWN	CHKD	REMARKS

DESIGNED BY: T. REESER
DRAWN BY: S. ENGEL/J. CABRERA
SHEET CHK'D BY: D. MURPHY
CROSS CHK'D BY: K. WAGNER
APPROVED BY: _____
DATE: OCTOBER 2023

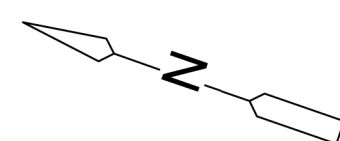
CDM Smith
77 Hartland Street, Suite 201
East Hartford, Connecticut
Tel: (860) 529-7615

BROOKFIELD, CONNECTICUT
POTENTIAL SEWER EXTENSION CONCEPT DESIGN
CANDLEWOOD PENINSULA AND
CANDLEWOOD LAKE ROAD AREA

ALTERNATIVE C
HYBRID COLLECTION SYSTEM WITH FIVE BWPCA
PUMPING STATIONS

PROJECT NO. 261865-269061
FILE NAME: ALTERNATIVE C
FIGURE 5-7

DRAFT - OCTOBER 2023



1"=600'

GRAVITY SEWER CONNECTION

GRINDER PUMP WITH GRAVITY SEWER CONNECTION

GRINDER PUMP WITH LOW PRESSURE FORCE MAIN CONNECTION

→ GRAVITY FLOW DIRECTION

— FM — FORCE MAIN (FM)
— LPS — LOW PRESSURE SEWER (LP)
● — ● GRAVITY MAIN

1" = 600'

A horizontal scale bar with a black and white checkered pattern on the left side. Below the bar are the numbers 300, 0, and 600, indicating distances in feet.

ALTERNATIVE D
HYBRID COLLECTION SYSTEM WITH THREE BWPCA
PUMPING STATIONS

BROOKFIELD, CONNECTICUT
POTENTIAL SEWER EXTENSION CONCEPT DESIGN
CANDLEWOOD PENINSULA AND
CANDLEWOOD LAKE ROAD AREA

BROOKFIELD, CONNECTICUT

DESIGNED BY: T. REESER
DRAWN BY: S. ENGEL/J. CABRERA
SHEET CHK'D BY: D. MURPHY
CROSS CHK'D BY: K. WAGNER
APPROVED BY: _____
DATE: OCTOBER 2023

**CDM
Smith**
77 Hartland Street, Suite 201
East Hartford, Connecticut
Tel: (860) 529-7615

DRAFT - OCTOBER 2023

XREFs: [CDMS: 2436] Images: []
Last saved by: CABREBAUG Time: 10/27/2023 12:33:20 PM
pw:\cdm\smith-cad2-pw\entley.com\pw_ph\261865\269061\04 Design Services NM_10%_01 General\10 BIM_CADD\ALTERNATIVE E.dwg
© 2023 CDM SMITH ALL RIGHTS RESERVED. THESE DOCUMENTS AND DESIGNS PROVIDED BY PROFESSIONAL SERVICE, INCORPORATED HEREIN, ARE THE PROPERTY OF CDM SMITH AND ARE NOT TO BE USED, IN WHOLE OR PART, FOR ANY OTHER PROJECT WITHOUT THE WRITTEN AUTHORIZATION OF CDM SMITH.



PLAN

1"=600'

GRAVITY SEWER CONNECTION

GRINDER PUMP WITH GRAVITY SEWER CONNECTION

GRINDER PUMP WITH LOW PRESSURE FORCE MAIN CONNECTION

→ GRAVITY FLOW DIRECTION

— FM — FORCE MAIN (FM)

— LPS — LOW PRESSURE SEWER (LPS)

— G — GRAVITY MAIN

1" = 600'
300 0 600

REV. NO.	DATE	DRWN	CHKD	REMARKS

DESIGNED BY: T. REESER
DRAWN BY: S. ENGEL/J. CABRERA
SHEET CHK'D BY: D. MURPHY
CROSS CHK'D BY: K. WAGNER
APPROVED BY: _____
DATE: OCTOBER 2023

CDM Smith
77 Hartland Street, Suite 201
East Hartford, Connecticut
Tel: (860) 529-7615

BROOKFIELD, CONNECTICUT
POTENTIAL SEWER EXTENSION CONCEPT DESIGN
CANDLEWOOD PENINSULA AND
CANDLEWOOD LAKE ROAD AREA

ALTERNATIVE E
LOW-PRESSURE SEWER SYSTEM WITH PRIVATE
GRINDER PUMPS

PROJECT NO. 261865-269061
FILE NAME: ALTERNATIVE E

FIGURE 5-9

DRAFT - OCTOBER 2023



Figure 6-2
Potential Groundwater Discharge Sites
Sanitary Sewer Extension Study
Dean and Pocono Roads and Candlewood Lake Area
Brookfield, Connecticut
DRAFT October 2023